

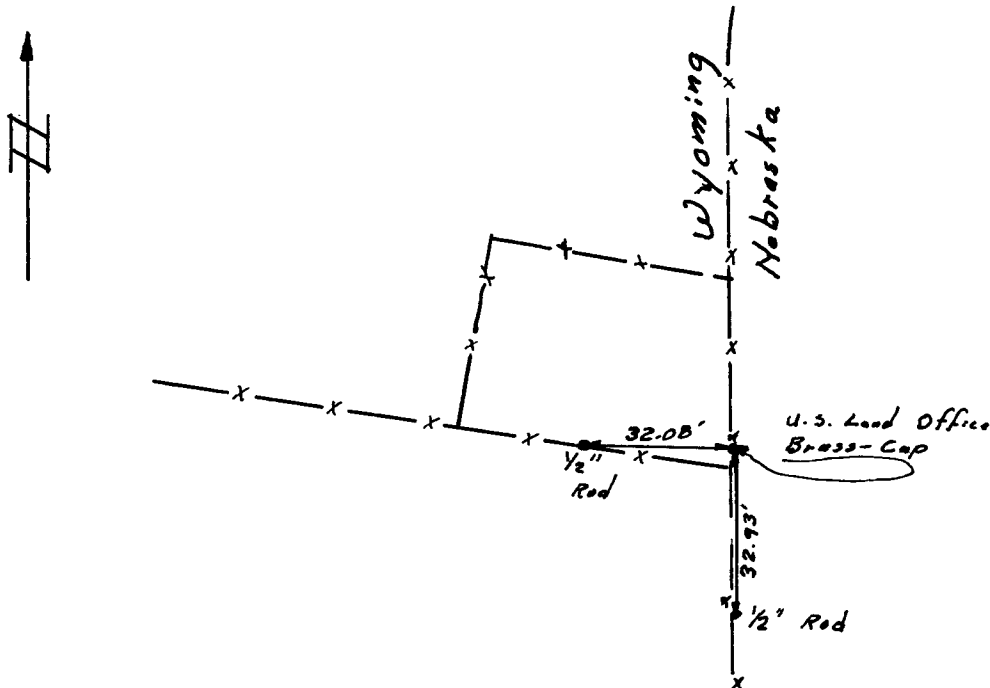
CERTIFIED LAND CORNER RECORDATION

LOCATION	DESCRIPTION OF CORNER EVIDENCE FOUND, AND ORIGINAL RECORD (if known)	T 14 N
Wyo <u>2</u> Nebr. <u>11</u>	Found U.S. Land Office Monument with brass-cap marked Wyo <u>2</u> Nebr. <u>11</u>	R 60 W
T 14 N, R 60 W 6th P.M.	G.L.O. record - same as above.	

DESCRIPTION OF MONUMENT AND ACCESSORIES ESTABLISHED TO PERPETUATE THE ORIGINAL LOCATION OF THIS CORNER:
Left corner as it was found.

Set witness corners to the south and to the west-northwest (see sketch)

SKETCH, WITH COURSE AND DISTANCE TO ADJACENT CORNER IF DETERMINED IN THIS SURVEY.
(May Sketch or Paste Reproduction on Reverse Side.)



I, Robert C. Corbet certify that I have carefully performed or reviewed the work done on the diagrammed corner as reported on this recordation form and approve the same.

Robert C. Corbet
Signature of Surveyor

495
Registration No.

STATE OF WYOMING,
Office of Clerk and Recorder,
County of _____

This "corner record" was filed for record on the _____ day of _____, 19____, was noted on the cross-index plat and is assigned page No. _____, in book No. _____.

	County Official		
Cross Index No. _____	T. _____	R. _____	Mer. _____
_____	T. _____	R. _____	Mer. _____
_____	T. _____	R. _____	Mer. _____
_____	T. _____	R. _____	Mer. _____
_____	T. _____	R. _____	Mer. _____
_____	T. _____	R. _____	Mer. _____
_____	T. _____	R. _____	Mer. _____

Photographed _____
Indexed _____
Posted _____
Assessor _____

The State of Wyoming 1888
County of Laramie

This instrument was filed for record
at 125 o'clock P M on the
6 day of January
A. D. 19 75 and duly recorded in
Book _____ on page _____

John C. Mitchell

County Clerk & Ex-Officio Register of Deeds
Deputy